



Floor Care Products

- Mop Buckets & Wringers
- Mop Heads & Handles
- Microfiber Flat Mop Buckets
- Microfiber Flat Mops & Handles
- Dust Pans & Brooms
- Floor Squeegees & Scrapers
- Floor Care Accessories
- Scrub Brushes
- Safety Signage
- Cleaners



Maintain Cleanliness with Professional Floor Care Solutions



Mop Buckets & Wringers

Sidepress Combo Water Management System

- Pressure-balanced Sidepress applies even pressure to the mop head and quickly channels dirty water away from mop
- Wave arresting water diffuser reduces spills
- Longer wringer handle generates greater pressure; posi-grip handle, non-marking castors
- Integrated hold-areas for a wet floor sign, mop handle and putty knife
- Stable base and caster placement increases tip resistance and maneuverability
- Optional dirty water bucket captures waste water, increasing square feet cleaned per gallon. Optional sediment drain grate traps waterborne sediment in bottom of bucket.



Item #	Description	Selling Unit
8Y/2637-3Y	Sidepress Combo (Wringer & Bucket)	1/cs
8YDWB	Dirty Water Bucket	10/cs
8YSYG	Sediment Drain Grate	20/cs
8YSYSTEM	Sidepress combo System (wringer, bucket, dirty water bucket, sediment drain grate)	1/cs

Downpress Wringer and Bucket Combo

- Pair our 4000 series wringers with our 2635-3 buckets for a complete solution
- Buckets have molded-in graduation marks and 3" inboard casters
- Wringers can be mounted on either side of the bucket, and will accommodate 16-40 oz. mops



Item #	Description	Selling Unit
2635-3B	Blue 35 qt. Bucket	1/cs
2635-3G	Gray 35 qt. Bucket	1/cs
2635-3Y	Yellow 35 qt. Bucket	1/cs
4000G	Gray Wringer Only	1/cs
4000Y	Yellow Wringer Only	1/cs
4G/2635-3G	Combo (Gray Wringer & Bucket)	1/cs
4Y/2635-3Y	Combo (Yellow Wringer & Bucket)	1/cs

Premium Sidepress Bucket and Wringers

- Packed with features like splash guard vents and inboard casters
- Structural foam polyethylene bucket and wringer resist corrosion
- Reinforced nylon bearings for smooth operation and steel handle for durability
- Single bail allows heavy loads to be lifted; bucket provides large mop target area



Item #	Description	Selling Unit
9Y/2626-3Y	Sidepress Wringer/26 qt. Bucket	1/cs
6B/2635-3B	Combo (Blue Bucket and Wringer)	1/cs
6G/2635-3G	Combo (Gray Bucket and Wringer)	1/cs
6Y/2635-3Y	Combo (Yellow Bucket and Wringer)	1/cs

Value-Plus® Sidepress Wringer and Plastic Bucket Combo

- All the features you need are bundled in this high-value combo
- Higher back for comfortable wringing; lower front for reducing back strain
- Large capacity side press/squeeze wringer accommodates 12-32 oz. mops
- Non-marking gray casters (not assembled)



Item #	Description	Selling Unit
7Y/2636-3Y	Combo (Yellow Bucket and Wringer)	1/cs

Metal Squeeze Wringer, Metal Bucket or Combo

- This all-metal wringer and bucket system maximizes durability and longevity
- WH2000 wringers feature a two-piece tubular steel handle and solid 5/8" square steel shaft
- 260/WH350 buckets are constructed of .024 mil galvanized steel and have 1/4" reinforced steel wire rim and embossed permanent graduations for easy measuring of water and solution
- Bucket has 2" Casters



Item #	Description	Selling Unit
260	Oval Galvanized 26 qt. Steel Bucket	1/cs
2000/260	Metal Bucket and Wringer Combo	1/cs
WH2000	Metal Squeeze Wringer - Only	1/cs

Metal Squeeze Wringer Plastic Bucket Combo

- Pair our 4000 series wringers with our 2635-3 buckets for a complete solution.
- Buckets have molded-in graduation marks and 3" inboard casters
- Wringers can be mounted on either side of the bucket, and will accommodate 16-40 oz. mops
- Constructed from heavily galvanized cold-rolled steel, the WH2000 is built to prevent rusting
- Accommodates 16-40 oz. mops



Item #	Description	Selling Unit
2/2635-3Y	Combo (Yellow Bucket and Metal Wringer)	1/cs
WH2000	Metal Squeeze Wringer - Only	1/cs

Compact Mopping System Combo

- Lightweight bucket and Sidepress wringer are perfect for small jobs
- Fits into tight spaces for convenient storage, handles up to a 20 oz. mop
- 2" non-marking casters provide smooth movement
- Removable/Optional divider insert allows clean and dirty water to be kept separate



Item #	Description	Selling Unit
2Y/2021-2Y	Combo (Yellow Bucket and Wringer)	1/cs

ToughWorks® Dual Chamber Bucket

- Made from sturdy, chemical resistant polypropylene, making it ideal to hold a wide variety of cleaning solutions
- Molded dual chambers prevent any leakage between dirty and clean water
- Down press wringer takes less force and is easier on cleaning staff
- Separate removable, light weight soil water bucket
- Removable wringer insert accommodates any size mop
- Smooth rolling casters



Item #	Color	Size	Selling Unit	Case Pack
92224083YL	Yellow	35 Quarts	1 ea	1/cs

Plastic Squeeze Wringer

- This wringer features a unique hopper, which accommodates 12-32 oz. mop heads
- Structural foam polyethylene wringer with one piece welded steel handle
- Splash guard water vents to eliminate splashing while wringing
- Reinforced nylon bearings for smooth wringing operation



Item #	Description	Selling Unit
WH6000B	Blue - Sidepress Wringer - Only	1/cs
WH6000G	Gray - Sidepress Wringer - Only	1/cs
WH6000Y	Yellow - Sidepress Wringer - Only	1/cs

Metal Squeeze Wringer

- This wringer is constructed of high-quality galvanized steel to prevent rusting
- Two-piece tubular steel handle and solid 5/8" square steel shaft
- Fully vented openings on all sides, allow quick water release
- Accommodates 20-40 oz mop heads
- Superior, large angle linkage system allows for maximum force throughout the wringing cycle



Item #	Description	Selling Unit
WH2000	Metal Squeeze Wringer - Only	1/cs

Plastic 15 Qt. Divided Pail with Wringer

- This small-but-mighty combo is perfect for small jobs and quick clean-ups
- Features a divided bucket with heavy-duty snap-on cone wringer
- Wringer slides from side to side accessing both compartments
- Accommodates mops up to 16 oz.



Item #	Description	Selling Unit
142	Gray 15 qt. Pail with Wringer	4/cs

Mop Heads & Handles

New Side Gate Mop Handle

- Heavy-duty fiberglass handle with honeycomb core for durability
- Release latch on the side of the frame head for easy removal of the mop eliminating touching dirty mop heads



Item #	Description	Selling Unit
T0044-00	60 in. - blue/Black - Fiberglass Handle	12/cs

Quick Change Side Gate Mop Handles

- Great for quick cleaning jobs or routine maintenance when paired with recommended Impact® or competitor mop heads
- Hinged side gate allows mop to easily slide on and off handle
- Convenient thumb wheel clamps the mop in place
- For use with 1" head band mops only
- 60" handles have a foam grip for comfortable control



Item #	Description	Selling Unit
LFQCRD	60 in. - Red/Black - Vinyl Coated Metal	12/cs
LFQCYL	60 in. - Yellow/Black - Vinyl Coated Metal	12/cs
LFIN54	54 in. - Yellow/Gray - Fiberglass	12/cs

Plastic Janitor Mop Handle

- Fiberglass mop handles are extremely light and strong
- Injection molded 7-5/8"-wide heads are completely rust and corrosion free
- Fiberglass shafts won't warp, rust or rot
- Plastic heads are non-marring and lightweight



Item #	Description	Size	Selling Unit
94	Fiberglass Mop Handle	64 in.	12/cs

Plastic Tymsaver II Clamp Head Mop Handles

- Clamp-style heads make these handles great for efficient mop change-outs
- Injection molded heads are completely rust and corrosion free
- Fiberglass shafts wont warp, rust or rot
- Plastic heads are lightweight and non-marring



Item #	Description	Size	Selling Unit
WH60	Blue/Black Fiberglass Handle 64 in.	60 in.	12/cs

Steel Mop Handles with Metal Heads

- For your biggest jobs, these steel handled screw-clamp handles are the best bet
- Clip-on frames fit canvas-back and pocket dust mops
- Steel shafts wont warp or rot
- Standard 5" wide frames available in 18", 24", 36", 48" or 60" lengths



Item #	Description	Size	Selling Unit
70360	Vinyl-Coated Steel Handle	58 in.	12/cs

Fiberglass Screw-Type Handle

- Lightweight and reliable, these handles pair with screw-type mop heads
- Fitted with an injection molded plastic ferrule to provide long term use without any rust
- Less flexible than aluminum handles and corrosion resistant.
- Handle features an end grip, providing extra comfort and control



Item #	Description	Size	Selling Unit
50360	Blue Fiberglass	60 in.	12/cs

Layflat® Regular Screw-Type Cut-End Cotton Wet Mop Head

- Constructed of grade 1 white yarn for high tensile strength and durability
- Ideal for general and rough surface use
- No-tangle band recommended for laundering
- 1" headband



Item #	Description	Size	Selling Unit
12116	White Cut-End	16 oz.	12/cs
12120	White Cut-End	20 oz.	12/cs
12124	White Cut-End	24 oz.	12/cs

Layflat® Regular Screw-Type Cut-End Blend Wet Mop Heads

- Mop goes from the bag to the bucket with no break-in period
- Grade 1 yarn; has natural color and great absorbency; cotton/synthetic blend
- Available with or without no-tangle band



Item #	Description	Size	Selling Unit
26116	Cut-End - Blue	16 oz.	12/cs
26124	Cut-End - Blue	24 oz.	12/cs
36120	No-Tangle - Blue	20 oz.	12/cs
36124	No-Tangle - Blue	24 oz.	12/cs
61200	Cut-End - White	20 oz.	12/cs
61240	Cut-End- White	24 oz.	12/cs

Layflat® Screw-Type Cut-End Rayon Wet Mop Heads

- Rayon material has minimal linting and is ideal for applying floor finish
- Grade 1 white rayon yarn for high tensile strength/durability; no break-in period
- Excellent absorbency and fast release; faster drying and mildew resistance
- Not recommended for laundering



Item #	Description	Size	Selling Unit
61116	Cut-End White	16 oz.	12/cs
61120	Cut-End White	20 oz.	12/cs
61124	Cut-End White	24 oz.	12/cs

Valumax™ Regular Screw-Type Cut-End Rayon Wet Mop Head

- This economy rayon mop offers 4 times its weight in absorbency
- Approximately 20% less expensive than grade 1 rayon mops
- Mop goes from the bag to the bucket with no break-in period
- Available in regular cut-end only; not recommended for laundering
- Mops are true weights



Item #	Description	Size	Selling Unit
40116	Cut-End - White	16 oz.	12/cs
40120	Cut-End - White	20 oz.	12/cs
40124	Cut-End - White	24 oz.	12/cs

MicroWorks® Disposable Cotton Cut-Off String Mop

- Economical Cotton Cut off Mop
- 4 Ply 100% Cotton
- 1" band
- Individually packed



Item #	Color	Size	Selling Unit	Case Pack
2504-DCP-LG	White	24 oz	1/bg	12 bg/cs

Cotton / Synthetic Blend Saddle-Type Looped-End Wet Mop with Tailband

- General purpose cotton synthetic blend for most applications
- Tailband & looping prevents fraying, linting, and tangling while providing wide surface coverage
- Wide 5" headband is vinyl coated mesh
- Recommended for laundering



Item #	Description	Size	Selling Unit
L270LG	Blue / Red	Large	12/cs
L270MD	Blue / Green	Medium	12/cs

Blue and White Rayon Saddle-Type Looped-End Finish Mop

- Finish Mop - 1" Wide Headband
- This rayon blend holds large amounts of finish for fewer trips to the bucket
- Tailband and looping prevents fraying, linting, and tangling while providing wide surface coverage
- Narrow headband and tailband are sewn on the inside, lowering issues with wax application
- Recommended for laundering



Item #	Description	Size	Selling Unit
L630LG	Blue/White Mop	Large	12/cs
L630MD	Blue/White Mop	Medium	12/cs

Cotton Saddle-Type Cut-End Wet Mop

- This basic mop is perfect for simple clean-ups
- Narrow headband construction
- Not recommended for laundering



Item #	Description	Size	Selling Unit
S12124	Natural	24 oz.	12/cs

Rayon Saddle-Type Cut-End Wet Mop

- These white rayon wet mops have excellent absorption and dry very quickly
- Narrow headband construction
- Less wet-time promotes resistance to mildew
- Not recommended for laundering



Item #	Description	Size	Selling Unit
S61120	White	20 oz.	12/cs
S61124	White	24 oz.	12/cs

MicroWorks® Disposable Mops

- Spunlace 40%, Viscose 60%, Polyester with a 1" band
- Excellent as single use healthcare strip mop
- More absorbent than standard rayon and cotton mops at half the weight
- Significantly less lint than standard rayon and cotton mops
- Virtually lint free
- More floor coverage than cotton or rayon mops
- Made from 100% post industrial recycled material
- 100% made in the USA



Item #	Color	Size	Selling Unit	Case Pack
2504-DSP-65	White	6.5 oz	1/bg	12 bg/cs

MicroWorks® Microfiber Strip Wet Mop

- Offers all the benefits of microfiber; streak free, scratch free, low-lint, and reusable
- Scrubber head
- Highly absorbent - up to seven times its weight
- Fits standard handles



Item #	Color	Size	Selling Unit	Case Pack
2504S-MFWP-GN	Green	Medium	1 ea	24/cs

MicroWorks® Microfiber String Wet Mop

- Traditional cleaning tool with the benefits of microfiber
- Color-coded bands help reduce cross contamination
- Scrubber pad on head removes tough residue on floors
- Can be used with standard mopping equipment for routine cleaning and spills
- Pre-shrunk for long lasting performance



Item #	Color	Size	Selling Unit	Case Pack
2504-MFWP-15B	Blue	15 oz.	1 ea	24/cs
2504-MFWP-18Y	Yellow	18 oz.	1 ea	24/cs
2504-MFWP-18B	Blue	18 oz.	1 ea	24/cs
2504-MFWP-22G	Green	22 oz.	1 ea	24/cs
2504-MFWP-22B	Blue	22 oz.	1 ea	24/cs

> Floor Care Products

Economy 4-Ply Cotton Traditional Dust Mop

- This looped-end dust mop offers high value cleaning for a variety of floors
- Looped-end dust mops are perfect for general cleaning of floors
- 100% polyester backing resists wear and shrinkage
- Fits standard 5-inch dust mop frames; 24" wide
- Space saver-reduce inventory space requirements by 3%



Item #	Description	Size	Selling Unit
17524	White	24 in.	12/cs

Microfiber Flat Mop Buckets

MicroWorks® Floor Care Bucket

- Accommodates flat mops up to 18"
- Wheels can be removed
- Tap board included to remove excess liquid from mop pads before use
- Secure cover included to prevent spills



Item #	Color	Size	Selling Unit	Case Pack
2505-MFBT-6GY	Gray	6 Gallons	1 ea	5/cs

Microfiber Top Down Charging Bucket with Strainer

- Durable plastic bucket is designed to accommodate up to 18" pads.
- Fits on maids carts and most microfiber cleaning trollies
- Includes sealable lid and strainer
- 6 gallon capacity with graduations
- For use with all 18" Microfiber flat mops

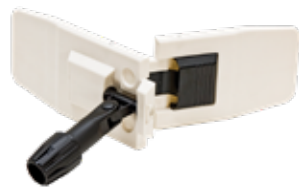


Item #	Description	Selling Unit
LF228	Gray	1/cs

Microfiber Flat Mops & Handles

Pocket Mop Frames

- Compatible with aluminum or steel pole with EVA grip
- Compatible with most commercial 18" pocket mops
- Durable plastic
- Locking pin on frame
- 18" Frames



Item #	Color	Size	Selling Unit	Case Pack
M700018-PM	White/Black	18"	1 cs	1 dz/cs

Pocket Mop Holder

- Easy interchangeability: The 16" pocket mop holder accessory is designed for easy interchangeability, allowing you to quickly switch between different mop heads or use multiple mop heads for different cleaning tasks.
- Compatible with Mopster 2.0 (T0022-00) as well as plain handles: Fixed 54" (T0028-00) and Adjustable 40"-71" (T0029-00)
- Strong and secure attachment: The pocket mop holder has a sturdy pivot assembly that securely attaches to the Mopster 2.0. Its strong magnetic mop release joint ensures that the mop stays in place during use and comes off easy when ready.
- Lightweight and durable construction: The pocket mop frame is made with lightweight yet durable materials, making it easy to handle and maneuver while also ensuring long-lasting performance.



Item #	Description	Selling Unit
T0031-00	18" Pocket Mop Holder	6/CS

Mop Adapters

- Convert your existing locking pin poles for use with loop and string mops
- Includes C-Clamp and screw cap to ensure a secure fit



Item #	Color	Selling Unit	Case Pack
M78001	Blue	1 cs	4 dz/cs

Telescopic Aluminum Poles

- Aluminum with plastic handle cap
- 71" extension pole



Item #	Color	Size	Selling Unit	Case Pack
M700071-EA	Blue/Silver	71"	1 cs	4 dz/cs

Steel Poles with Eva Grip

- Steel handle with foam EVA grip



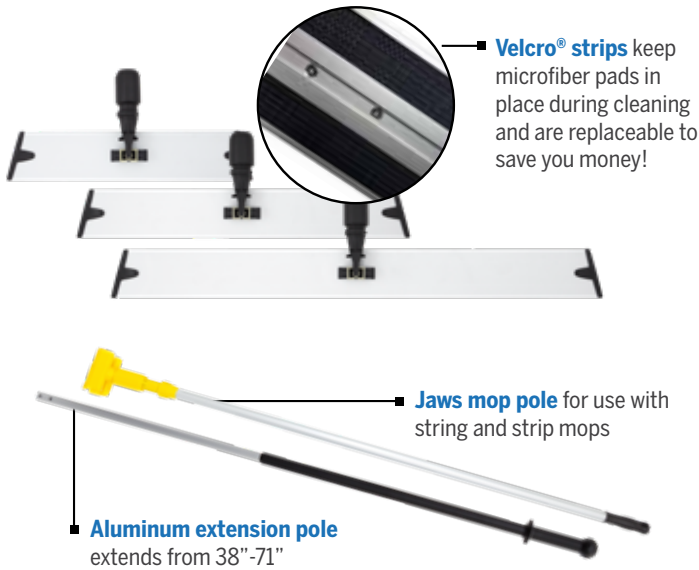
Item #	Color	Size	Selling Unit	Case Pack
M78002	Blue/Silver	71"	1 cs	2 dz/cs

Flat Mop Handle

Item #	Description	Selling Unit
T0028-00	Fixed 54" Flat Mop Handle	6/cs
T0029-00	Adjustable 40"-71" Flat Mop Handle	6/cs

MicroWorks® Microfiber Handles and Frames

- Swivelling head can be locked into place
- Velcro® strips and handle connectors are replaceable
- Frames available for the 18", 24", and 36" Velcro® pad backing



Item #	Description	Selling Unit	Case Pack
2505-MFMH-3871	Aluminum Extension Pole	1 ea	24 ea/cs
2505-MFJAW62	Aluminum Yellow Jaws Mop Pole	1 ea	25 ea/cs
2505-MFMB-18	Aluminum Base for 18" Pad (5"x16")	1 ea	50 ea/cs
2505-MFMB-24	Aluminum Base for 24" Pad (5"x22")	1 ea	50 ea/cs
2505-MFMB-36	Aluminum Base for 36" Pad (5"x33")	1 ea	50 ea/cs
VRB	Hook and Loop Replacement Bar, 24" Fits 2505-MFMB 18", 24"	2/pk	-
VRB-CAP	Cap for Aluminum Base, Fits 2505-MFMB 18", 24", 36"	2/pk	-

Mopster 2.0

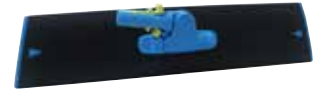
- An update of an old favorite, the Mopster 2.0 product family has been reimagined to enhance your floorcare process with ergonomics and durability in mind. Perfect for residential, commercial, or industrial cleaning operations.
- Pressure activated on/off button improves control in dispensing
- New ribbed 36 ounce bottle designed for easy extraction/insertion
- Low-level indicator window
- Slim 4 inch mop profile for cleaning under furniture



Item #	Description	Size	Selling Unit
T0022-00	Mopster 2.0	16.25" L x 3.5" W x 58.5" H	1/cs

Mopster 2.0 Pad Holder

- Compatible with Mopster 2.0 (T0022-00) as well as handles: Fixed 54" (T0028-00) and Adjustable 40"-71" (T0029-00)



Item #	Description	Selling Unit
T0025-00	18" Pad Holder	6/cs
T0026-00	24" Pad Holder	6/cs

Mopster 2.0 Bottle with Teather and Caps



Item #	Description	Selling Unit
T0020-00	Mopster 2.0 Bottle with Teather and Caps	50/cs

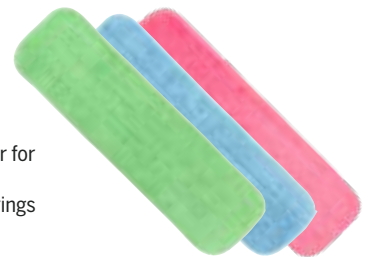
Mopster® Valve Kit



Item #	Description	Selling Unit
LBH18VK	Valve Kit	50/cs

MicroWorks® Microfiber Wet Flat Mop With Velcro® Back

- Can be used on any hard surface and leaves no residue
- Center layer has additional microfiber for increased absorbency and durability
- Will last through hundreds of launderings
- Easily removable for laundering



Item #	Color	Size	Selling Unit	Case Pack
Standard Wet Flat Mops				
2504-MFFP-18G	Green	5" x 18"	1 dz	16 dz/cs
2504-MFFP-18B	Blue	5" x 18"	1 dz	16 dz/cs
2504-MFFP-18W	White	5" x 18"	1 dz	16 dz/cs
2504-MFFP-18R	Red	5" x 18"	1 dz	16 dz/cs
2504-MFFP-24G	Green	5" x 24"	1 dz	16 dz/cs
2504-MFFP-24B	Blue	5" x 24"	1 dz	16 dz/cs
Economy Wet Flat Mops				
2504V-MFFP-18G	Green	5" x 18"	1 dz	16 dz/cs
2504V-MFFP-18B	Blue	5" x 18"	1 dz	16 dz/cs

> Floor Care Products

Econo Wet Mops

- These mops are designed for budget cleaning therefore have a slightly shorter life span
- Whereas our standard flat mops include a robust microfiber filling, Econo wet mops use a more economical foam filling
- If you're in an environment where mops are frequently thrown out, or you need to lower cost, these are great options at lower price points



Item #	Color	Size	Selling Unit	Case Pack
M830018G-F	Green	18"	1 cs	10 dz/cs
M830018B-F	Blue	18"	1 cs	10 dz/cs

Microfiber Flat Finish Mop

- Specially designed to hold and release finish for even coat
- Trapezoid shape for easy application in corners
- Blue microfiber strips are more rigid and help smooth finish
- Top quality hook & loop backing



Item #	Description	Size	Selling Unit
3189	Blue/White	18 in.	12/bg; 10 bg/cs

Microfiber Trapezoid Finish Pad

- Hook-and-loop backing allows this pad to pair with our microfiber bases
- Looped end microfiber for better release of finish
- Two layers of white microfiber for better absorption
- Designed to fit holders of the bucketless handle system



Item #	Description	Size	Selling Unit
LFFV18	White	18 in.	12/bg; 10 bg/cs

MicroWorks® Microfiber Scrubber Flat Mop With Velcro® Back

- Recommended when more aggressive cleaning is required
- Ideal for cleaning tile and grout, concrete and stone floors
- For use in high traffic areas to lift dirt and grime
- Easily removable for laundering



Item #	Color	Size	Selling Unit	Case Pack
2504-MFFP-18BS	Blue	18"	1 dz	16 dz/cs

Microfiber Flat Wet Mop with Scrubber Strips

- Designed to combat heavy debris and dried-on messes
- Plastic scrubbing strips add texture to loosen dirt and break surface tension
- Looped end mop
- Microfiber specially designed to hold and release finish for even coat



Item #	Description	Size	Selling Unit
3159	White / Green	18 in.	12/bg; 10 bg/cs

Scrubbing Wet Flat Mop

- Scrubbing wet flat mops take on the heavy grime, using polypropylene ridges to create a mop that glides, cleans, and removes dirt at the same time
- Durable double stitched edges
- 5.5" Wide backing
- 80% Polyester, 20% Polyamide
- Can launder up to 500 times



Item #	Color	Size	Selling Unit	Case Pack
M800013B	Blue	13"	1 cs	10 dz/cs
M800013G	Green	13"	1 cs	10 dz/cs
M800018B	Blue	18"	1 cs	10 dz/cs
M800018G	Green	18"	1 cs	10 dz/cs
M800018R	Red	18"	1 cs	10 dz/cs
M800024B	Blue	24"	1 cs	10 dz/cs
M800024G	Green	24"	1 cs	10 dz/cs
M800024R	Red	24"	1 cs	10 dz/cs

Horizontal Stripe Scrubbing Mops

- Industrial strength flat wet scrubbing mop is larger than the standard scrubbing mops and features tough polypropylene ridges
- Durable stitched edges
- 80% Polyester, 20% Polyamide
- Can be laundered up to 500 times
- 6" Wide backing



Item #	Color	Size	Selling Unit	Case Pack
M100018	Green/White	18"	1 cs	10 dz/cs
M400018-G/B	Blue/Grey	18"	1 cs	10 dz/cs

Microfiber Flat Wet Mops

- Polypropylene scrubbing strips make deep cleaning easier and more complete
- A layer of microfiber for fluid retention makes it more bacteria resistant than traditional foam
- Excellent launderability
- Available in multiple colors for a coded cleaning system
- Scrubbing strips are made of a high quality polypropylene for deep grout cleaning



Item #	Description	Size	Selling Unit
LWBS13	Blue	13 in.	12/bg; 10bg/cs
LWBS18	Blue	18 in.	12/bg; 10bg/cs
LWBS24	Blue	24 in.	12/bg; 10bg/cs
LWGS13	Green	13 in.	12/bg; 10bg/cs
LWGS18	Green	18 in.	12/bg; 10bg/cs
LWYS18	Yellow	18 in.	12/bg; 10bg/cs

Microwool Finish Applicator Mop

- This premium soft, deep pile microfiber mop designed for a smoother finish application for large areas of floor
- The MicroWool mop takes the best properties of both microfiber flat mops and wool applicators and blends them into a superior distribution tool
- Fits flat mop frames



Item #	Description	Color	Size	Selling Unit	Case Pack
M870018FP	Applicator Mop	White	18"	1 cs	10 dz/cs
M870024FP	Applicator Mop	White	24"	1 cs	10 dz/cs

Mesh Backed Side Pocket Mops

- 100% microfiber mesh backed for a stretched snug fit
- Mesh construction dries quicker than traditional canvas pocket mops
- The 18" Mop fits existing pocket mop frames



Item #	Color	Size	Selling Unit	Case Pack
M880018B-MB	Blue	18"	1 cs	10 dz/cs
M880018G-MB	Green	18"	1 cs	10 dz/cs
M880018R-MB	Red	18"	1 cs	10 dz/cs

Wet/Dry Microfiber Loop Mops

- Loop mops soak up more water than a flat mop when wet, and also trap as much dirt as a dust mop when used dry
- Quickly change heads without changing the frames
- As this mop is color-coded, it works perfectly with our flat mop, scrubbing flat mop and dust mop



Item #	Color	Size	Selling Unit	Case Pack
M860018B	Blue	18"	1 cs	10 dz/cs
M860018G	Green	18"	1 cs	10 dz/cs
M860018R	Red	18"	1 cs	10 dz/cs

Side Pocket Mops

- Pocket side mops feature microfiber 'finger loops' to trap more dirt
- Our pocket mops are more absorbent than competitor brands, feature an industrial strength canvas backing and matching hardware (sold separately)
- Compatible with all major brand name frames, our mops are available in five colors to prevent cross-contamination



Item #	Color	Size	Selling Unit	Case Pack
M880018B-PM	Blue	18"	1 cs	10 dz/cs
M880018G-PM	Green	18"	1 cs	10 dz/cs
M880018R-PM	Red	18"	1 cs	10 dz/cs
M880018Y-PM	Yellow	18"	1 cs	10 dz/cs
M880018W-PM	White	18"	1 cs	10 dz/cs

MicroWorks® Microfiber Dust Mops with Pocket

- Will fit standard frames and handles
- Free of any straps or ties



Color-coded canvas backing to reduce cross contamination

Item #	Color	Size	Selling Unit	Case Pack
2506-MFDM-180	Gray/Navy - Orange Canvas Back	18"	1 ea	24/cs
2506-MFDM-24Y	Gray/Navy - Yellow Canvas Back	24"	1 ea	24/cs
2506-MFDM-36R	Gray/Navy - Red Canvas Back	36"	1 ea	24/cs
2506-MFDM-48B	Gray/Navy - Blue Canvas Back	48"	1 ea	24/cs
2506-MFDM-60GN	Gray/Navy - Green Canvas Back	60"	1 ea	24/cs
2506-MFDM-72GY	Gray/Navy - Gray Canvas Back	72"	1 ea	24/cs

MicroWorks® Microfiber Dust Mops With Velcro® Back

- No additional foam layer, providing more durability
- Easily removable for laundering



Item #	Color	Size	Selling Unit	Case Pack
2506-MFVM-18	Gray/Navy	18"	1 ea	6 dz/cs
2506-MFVM-24	Gray/Navy	24"	1 ea	4 dz/cs
2506-MFVM-36	Gray/Navy	36"	1 ea	4 dz/cs

Microfiber Pads - Fringe Dry/Dust Mop Hook-and-Loop

- These dust mops feature hook-and-loop backing, for use with microfiber bases
- Cut-end microfiber with fringe picks up larger dust particles and trash; holds dust electrostatically
- Gathers more dust than cotton mops
- Coordinate with Microfiber bases
- Extra padding in the mop allows for complete surface contact



Item #	Description	Size	Selling Unit
LFFD18	Gray / Blue	18 in.	12/bg; 8 bg/cs

MicroWorks® Disposable Cleaning Pads

- 100% synthetic absorbent material
- Can be used with any cleaning solution
- Use for both wet and dry applications
- Sanitizer compatible
- Attaches to any hook and loop base tool



Item #	Color	Size	Selling Unit	Case Pack
2504-DPPFP-10W	White/Blue	Medium - 11"	1 dz	16 dz/cs
2504-DPPFP-15W	White/Blue	Large - 15"	1 dz	16 dz/cs
2504-DPPFP-17W	White/Blue	X-Large - 17"	1 dz	16 dz/cs
2504-DPPFP-19W	White/Blue	XX-Large - 19"	1 dz	16 dz/cs

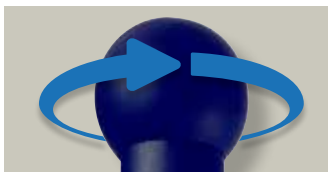


Innovative SPHERGO SWIVEL® mop handle eases wrist strain. Ease of motion, better reach make life easier for cleaning professionals.

Repetitive stress injuries (RSIs) are a hazard of working as a professional cleaner, but it doesn't have to be this way. The Sphergo® line of ergonomic surface cleaning tools continues to improve working conditions for these vital members of the workforce with the new Sphergo Swivel® mopping tool, specially designed to reduce RSIs.

SPHERGO SWIVEL® Mopping Tool

- The Sphergo Swivel® unique curved pole positions the user's body posture optimally to reduce repetitive strain injuries
- The rotating ball handle reduces unnecessary wrist motion while improving grip and control
- The curved pole paired with rotating ball on the handle allows for effortless smooth mopping "S" motion
- Sphergo Swivel® curved pole allows for farther reach underneath low-clearance obstructions like beds, chairs, and desks relative to a tradition straight mop while eliminating awkward bending
- Trapezoid frame design provides easier access into corners and along baseboards while making pad removal effortless
- The base's rounded edges help prevent any damage to sensitive areas such as wood trim or wooden furniture legs
- Replaceable hook and loop strips
- Lightweight aluminum frame



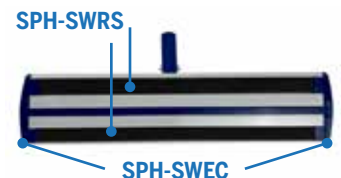
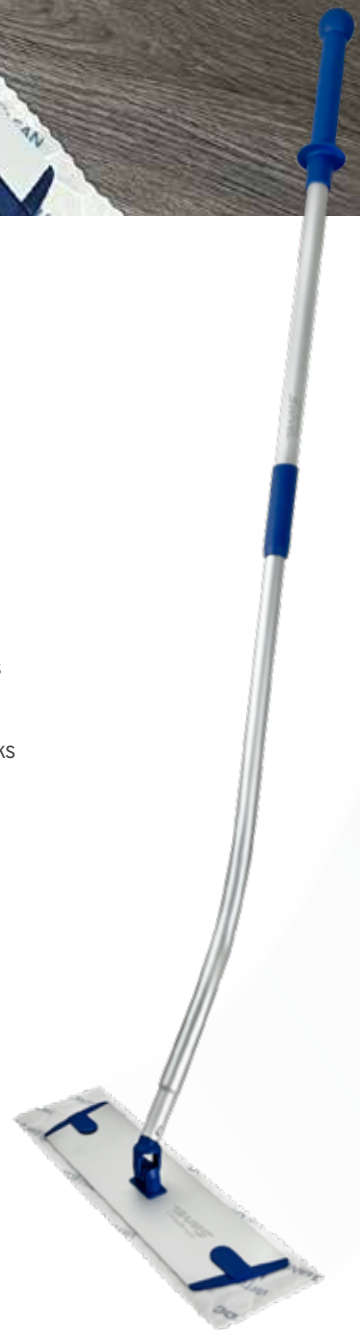
Rotating ball handle allows for improved grip and control.



Curved pole allows for farther reach under beds, chairs and more.



Trapezoid frame design provides easier access into corners.



Item #	Description	Selling Unit	Case Pack
2505-SWPOLE	Sphergo Swivel® White Aluminum Extension Pole	1 ea	12/cs
2505-SWBASE	Sphergo Swivel® White Aluminum Base for 18"-20" Pads	1 ea	12/cs
SPH-SWKT	Sphergo Swivel® Starter Kit Tools: (1) White Aluminum Extension Pole, (1) White Aluminum Base, Pads*: (12) Virtu-Clean® VCU2 pads, (12) Virtu-Clean® VCDCS pads	1 kit	1 kit/cs
SPH-SWEC	Sphergo Swivel® Replacement End Caps	1 pk	2/pk
SPH-SWRS	Sphergo Swivel® Replacement Velcro Strips	1 pk	2/pk

*During the transition period you may receive a kit that contains (12) Virtu-Clean® VCU pads, (12) Virtu-Clean® VCDC pads, (12) Virtu-Clean® VCDCS pads

The Sphergo Swivel® pole and base combination can be used with any 18"-20" disposable or reusable microfiber flat pad, but we recommend pairing Sphergo Swivel® with the Virtu-Clean® line of disposable cleaning pads for even more efficacious cleaning and less worker strain! These specially engineered pads are designed to reduce friction while maximizing cleaning results and coverage area.



Charge once, even coverage, and a cleaner floor.

Not all cleaning pads are equal. Absorbency rates, release rates, coverage, and linting can vary greatly, significantly impacting the finished product. Virtu-Clean® Disposable Cleaning Pads are specially engineered for critical environments, giving you maximum coverage, cleaning, and convenience. Our disposable, single-use mop pads check all the right boxes – they hold more liquid, release that liquid at a controlled rate over a larger surface area, and reduce friction for more effort-free cleaning.

Virtu-Clean® Disposable Cleaning Pads

VCU2 | Virtu-Clean® Universal Disposable Cleaning Pad

- VCU2 offers the same efficacy as the original VCU, but now includes up to 90% recycled content!
- USP <797> Compliant for pharmacy sterile compounding and sterile preparations
- Eco friendly manufacturing with no chemical dyes used in the process
- Contains up to 90% post-consumer recycled content
- Single use application to reduce risk of cross contamination
- No quat binding
- Compatible with chlorine bleach, hydrogen peroxide, and common disinfectants up to 400 sq. ft. cleaning coverage
- Absorbs 9x its weight in liquid
- Superior absorbency and release provides consistent coverage and cleaning
- Embossed pattern reduces friction for less strain on workers
- Channels efficiently pick up and retain dirt in pad
- Bonded edges improve performance greatly, reducing linting for a cleaner clean
- Polyester backing produces less lint upon removal from base
- Bag in bag packaging for cleanroom application
- Perfect for foodservice and food processing operations, healthcare facilities, cleanrooms, controlled environments, surgical rooms, ICU areas, pharmacy applications, and other institutions

VCDCS | Virtu-Clean® DCS Disposable Cleaning Pad w/Scrubber

Similar to the VCU2 pad, but with built in scrubbers for more aggressive cleaning and stain removal. With up to 48% recycled content, our VCDCS pads holds nearly 6x their weight in cleaning fluid, which translates into 240-300 sq. ft. of cleaning coverage with a single charge.



VCU2



VCDCS



Cleaning pads marked with this symbol are environmentally friendly with 48% - 90% post-consumer recycled content.

All pad options can be used with most flat mop bases; however, Hospeco Brands Group designed and recommends the pads be used with the new Sphergero Swivel®, for a more complete ergonomic cleaning solution.

Item #	Description	ISO Class	Size	Selling Unit
VCU2 	Virtu-Clean® Universal Disposable Cleaning Pad	ISO Class 5	5" x 19"	20 pads/bg, 12 bgs/master bg - 1 master bg/cs
VCDCS 	Virtu-Clean® DCS Disposable Cleaning Pad w/Scrubber	ISO Class 5	5" x 19"	20 pads/bg, 12 bgs/master bg - 1 master bg/cs
SPH-SWKT	Sphergero Swivel® Starter Kit Tools: (1) White Aluminum Extension Pole, (1) White Aluminum Base, Pads*: (12) Virtu-Clean® VCU2 pads, (12) Virtu-Clean® VCDCS pads	-	-	1 kit

*During the transition period you may receive a kit that contains (12) Virtu-Clean® VCU pads, (12) Virtu-Clean® VCDC pads, (12) Virtu-Clean® VCDCS pads

Dustpans & Brooms

Lobby Dustpan with L-Grip Aluminum Handle

- L-Grip Handle - comfortable and ergonomic
- Intuitive Locking Handle - Locks pan in place for ease of emptying
- Enhanced broom cleaning fins- Extra long fins effectively clean lint and debris from brooms
- Hand Grip on Pan - Allows for ease of lifting and disposing of heavier loads
- 11.5" pan opening- standard size for general cleaning



Item #	Description	Selling Unit
T0011-00	L-Grip Aluminum Handle Dust Pan	1/cs
T0011-01	L-Grip Aluminum Handle Dust Pan (6 Pack)	6/cs
T0012-00	L-Grip Aluminum Handle Dust Pan/Broom/Clip Combo	1/cs

Lobby Dustpan Broom

- Flagged Bristles- Effective clean up fine particles
- Solid block head and coated handle for added durability
- Angled bristle design improves cleaning in hard to reach areas
- Compact design is perfect to keep with Lobby Dust Pan and on a cleaning cart



Item #	Description	Selling Unit
T0015-01	36" Broom	12/cs

Lobby Dustpan with PVC Straight Handle

- The lobby dustpan with PVC straight handle has been updated with a modern and durable design suitable for commercial use, making it a reliable, attractive and long-lasting addition to your janitorial equipment
- Straight PVC Handle -Simple and cost effective design
- Intuitive Locking Handle - Locks pan in place for ease of emptying
- Enhanced broom cleaning fins- Extra long fins effectively clean lint and debris from brooms
- Hand Grip on Pan - Allows for ease of lifting and disposing of even heavy loads
- 11.5" pan opening- standard size for general cleaning



Item #	Description	Selling Unit
T0013-01	Straight PVC Handle Dust Pan	6/cs
T0014-00	Straight PVC handle Dustpan/Broom/Clip Combo	1/cs

Large Wet/Dry Lobby Dustpan

- The large wet/dry lobby dustpan is built for large scale handling of both wet and dry materials. Ergonomic grip, wheels and locking handle ensure ease and comfort to keep cleaning crews mobile
- Wide opening - Extra wide 14" opening collects large debris with ease
- Elevated retention dam- Traps liquid and ice in the pan, preventing any slop from escaping during use. Holds up to 1/2 gallon of fluid
- Rear transport wheels - Make for ease of maneuvering during transport or while in use
- Sweep Seal- Picks up liquids and fine debris
- Hand Grip on Pan - Allows for ease of lifting and disposing of heavier loads



Item #	Description	Selling Unit
T0017-00	Wet/Dry Large Capacity Dust Pan	1/ea
T0017-01	Wet/Dry Large Capacity Dust Pan	6/cs
T0018-00	Wet/Dry large Capacity Dustpan/Broom/Clip Combo	1/cs

Lobby Dustpan Broom Clips

- The perfect accessory to add hassle free attachment and detachment of broom to dustpan
- Space-saving solution for storage of brooms and dustpans, ensuring that you keep your cleaning equipment organized and within easy reach.
- Durable and long-lasting: Made from high-quality materials, lobby dustpan broom clips are made to last.
- Improves safety: The broom clips help to improve safety in your workspace by ensuring that brooms are stored securely and not left leaning against walls or furniture, which could be a potential tripping hazard.
- Easy installation: The lobby dustpan broom clips are easy to install, requiring no special tools or equipment, ensuring that you can set them up quickly and start using them right away.



Item #	Description	Selling Unit
T0016-01	Broom Clips	6 Broom Clips/Case

Small Angled Plastic Brooms

- Waterproof plastic bristles for fine sweeping and high durability
- Flagged tip design for effective clean-up of fine particles
- Plastic coated aluminum handle is lightweight and strong
- Angled bristle pattern for hard-to-reach areas
- Angled for hard-to-reach areas



Item #	Description	Size	Selling Unit
91526	Yellow	53 in.	6/cs
91527B	Yellow	55 in.	6/cs

Warehouse Corn Broom

- Great for a variety of surfaces and debris weights, featuring strong natural bristles
- 30% corn / 70% rattan
- Corn-blend brooms are adaptable for many cleaning tasks
- Applicable in both industrial and janitorial sweeping



Item #	Description	Size	Selling Unit
3653	Warehouse Broom	57 in.	6/cs

Hand Held Dust Pans

- These lightweight and durable dust pans have many convenient features
- Molded ridges for broom and counter brush cleaning
- Rubberized finish on #706 allows for increased durability and minimizes static
- Fine front-edge for maximum pickup



Item #	Description	Size	Selling Unit
700	Black Plastic	12 in.	12/cs

Metal Lobby Dust Pan

- The metal handle and pan provide excellent durability
- Heavy 22-gauge steel construction
- Baked-on black finish resists scuffing and wear
- Chrome-plated, 31" handle with hang-up hole for easy storage



Item #	Description	Selling Unit
2604	Black	6 Dust Pans/Case

Floor Squeegees & Scrapers

Heavy-Duty Metal Moss Squeegee

- Galvanized Steel Frame with Reinforced Handle Socket
- Metal Splash guard directs water flow
- Natural Rubber - Strong and flexible
- 2" Tall Double Blades, Non-Absorbent



Item #	Description	Size	Selling Unit
8356	Silver / Black	22 in.	10/cs

Metal Dust Pan

- These heavy duty metal dust pans are ready for your toughest jobs
- Baked-on black enamel finish protects the pan in all conditions
- Hang-up hole for convenient storage on a peg board or cart
- Made from a single piece of 20-gauge steel



Item #	Description	Size	Selling Unit
4212	Black	12 in.	12/cs
4216	Black	16 in.	12/cs

Standard Moss Floor Squeegee

- Multi-Surface Use: Tile, Marble, Concrete, Brick, Uneven Surfaces
- Galvanized Steel Frame
- Natural Rubber Blades - Strong and Flexible
- 1 1/2" Tall Double Wall Blades, Non-Absorbent



Item #	Description	Size	Selling Unit
7018	Black	18 in.	10/cs
7022	Black	22 in.	10/cs
7030	Black	30 in.	10/cs

Value-Plus Dust Pan

- Polypropylene dust pan makes cleaning a breeze
- Durable and lightweight
- Fine edge pick-up with hanger slot
- Molded ridges for broom and counter brush cleaning



Item #	Description	Size	Selling Unit
710	Black	12 in.	12/cs

Plastic Moss Floor Squeegee with Double Blades

- Acid resistant with non-corroding polypropylene frame
- Acme threaded connection
- 2" tall Double Blades, non-absorbent
- Leaves Surface dry to the touch



Item #	Description	Size	Selling Unit
6261	White	22 in.	10/cs

> Floor Care Products

Standard Moss Floor Squeegee - Neoprene

- A lightweight reinforced steel frame provides strength while lowering user fatigue
- Galvanized Steel Frame
- Neoprene Rubber is resistant to oils and solvents
- Leaves surface dry to the touch



Item #	Description	Size	Selling Unit
8354	Silver / Red	22 in.	10/cs

Straight Rubber Blade Squeegee

- This basic rubber floor squeegee comes in a variety of sizes
- Constructed with a high-grade rubber blade
- Rugged galvanized steel support frame
- Tapered handle socket



Item #	Description	Size	Selling Unit
222-18	Silver	18 in.	2/cs
222-24	Silver	24 in.	2/cs
222-36	Silver	36 in.	2/cs

Curved Rubber Blade Squeegee

- Curved blade helps to gather water and liquid around drain openings and vessels
- Constructed with a high-grade rubber blade
- Rugged galvanized steel support frame
- Tapered handle socket



Item #	Description	Size	Selling Unit
223-24	Silver	24 in.	2/cs
223-36	Silver	36 in.	2/cs

Squeegee Handles

- Choose from wood or fiberglass options for your application
- Designs that fit most squeegee handles
- Designed for floor squeegees
- Extend your reach with a confident grip



Item #	Description	Size	Selling Unit
8101	Fiberglass - White	54 in.	12/cs

3-Degree Aluminum Handle

- Comfortable grip and Acme threaded zinc alloy tip makes jobs easier
- 3.0 degree taper and universal threaded socket
- Hang-hole for storage convenience
- Comfortable grip



Item #	Description	Size	Selling Unit
6271	Aluminum 3 Degree Handle	61 in.	6/cs

Safety Scraper

- Blade retracts when not in-use for safe storage and transport
- Durable metal construction holds up to heavy use
- Thumb slide moves blade to operating position
- Replacement blades available



Item #	Description	Selling Unit
3410	Silver Safety Scraper	100/cs
3410B	Silver Replacement Blades	100/pk; 50pk/cs

Economy Putty Knife

- 11/2" mirror putty knife with precision-ground, rust-resistant, and solvent-proof blade



Item #	Description	Selling Unit
T0005-00	Stiff	12/bx; 12bx/cs
T0006-00	Flex	12/bx; 12bx/cs

Putty Knife

- These putty knives are perfect for prepping floors and removing stubborn debris
- Polypropylene handle is chemical and solvent resistant
- Textured grip for control
- Stainless steel blade



Item #	Description	Selling Unit
3200	Black - 11/4 in.	100/cs
3201	Blue - 11/4 in.	100/cs
3203	Red - 11/4 in.	100/cs
3401	Blue - 3 in.	100/cs

Floor Care Accessories

Floor Pad Holders

- Swivel bases are great for scrubbing hard-to-reach areas and deep cleaning
- Built-in teeth on either base accepts 4.5" x 10" cleaning pads
- Accepts any 15/16" diameter tapered (#2007) or acme-threaded handle (#2000)
- 1 brown stripping pad and 1 white polishing pad included with 2001WP



Item #	Description	Selling Unit
2000IP	Acme Threaded Socket Pad Holder	12/cs
2001WP	Acme Threaded Socket Holder w/Pads	1/bx; 12 bx/cs
2007	Universal Locking Collar Pad Holder	12/cs
2007WP	Universal Locking Collar Holder w/Pads	12/cs

Utility Pads for Hand Held and Floor Holders

- A variety of utility pads for all your small cleaning areas
- Various levels of aggressiveness for light, medium and heavy soil loads
- Fits floor holders #2000 and #2007
- #2005 is natural cotton, pre-laundered and washable; for dry or wet mopping small areas



Item #	Description	Selling Unit
2002PW	White Polishing Pad	250/cs
2002PB	Brown Stripping Pad	250/cs
2005IP	Natural Wall Washer Pad	12/cs

Treads

- Provide skid resistance and support while stripping floors
- 100% waterproof, made of natural rubber
- Covers most work shoes up to ankles
- Abrasive outsoles



Item #	Description	Selling Unit
7313M	Medium (Men's 8-9)	1 pair/pk; 12 pk/cs
7313L	Large (Men's 10-11)	1 pair/pk; 12 pk/cs
7313XL	X-Large (Men's 12-13)	1 pair/pk; 12 pk/cs
73132X	XX-Large (Men's 14-15)	1 pair/pk; 12 pk/cs

Long Handle Lint Roller

- Picks up lint, dust and hair from a variety of surfaces
- Long handle eliminates bending
- Handle extends up to 61"; fast and efficient for picking up lint, dust and hair
- 60 sheets per roll; 6.25" wide sheets



Item #	Description	Selling Unit
7450	Red / Silver	24/cs
7451	White Sheet Refill Roll	3/pk; 36 pk/cs

Long-Handled Scrapers

- Utilize these long-handled scrapers to increase your reach for hard-to-get debris
- Reversible tempered 4" steel blade has blunt edge and a razor edge
- Each unit comes with blade cover for safe transport and storage
- 3411B carbon steel replacement blades fit both #3411 and #3449



Item #	Description	Selling Unit
3411	12 in. Scraper	6/cs
3449	48 in. Scraper	6/cs
3411B	Replacement Blades for 12 in. & 48 in. Scraper	10/ea; 6 ea/pk; 10 pk/cs

Scrub Brushes

Iron Handle Scrub Brush

- Comfort grip iron shaped brush for cleaning open spaces and corners with firm PET bristles
- Ergonomic comfort grip handle
- Scratchless chemical resistant brush
- Iron shaped brush for getting in to corners and other tight spaces



Item #	Description	Selling Unit
T0004-00	Blue/Gray	6/cs

Long Handle Scrub Brush

- Ideal for cleaning in kitchens and bathrooms
- 2" crimped polypropylene bristles
- Hang hole for easy storage



Item #	Description	Selling Unit
T0010-00	Blue/Gray	24 Brushes per Case

Heavy Duty Swivel Scrub Brush

- Extend your reach with maximum pressure to stubborn stains
- No job too tough for this brush
- Used for aggressive scrubbing of hard-to-reach areas
- Screw-in handle adjusts brush to any angle for cleaning



Item #	Description	Selling Unit
37000	Blue / White Plastic	6 Brushes per Case

Tile and Grout Brush

- When deep cleaning washrooms, this brush is essential
- Three rows of nylon bristles
- 9" Plastic handle with hang-up hole
- 3.5" Brush length



Item #	Description	Selling Unit
T0001-00	Blue/Gray	24/cs

> Floor Care Products

Tile and Grout Brush with Acme Threading

- Chisel cut bristles are designed to manipulate all types of grout lines
- Chemically-resistant polypropylene bristles
- Swivel head allows brush to be used in both directions, extending the life of the brush
- Works with standard acme threaded handles



Item #	Description	Selling Unit
224	White / Black	12/cs

Hand and Nail Brush

- Stiff bristles remove tough dirt and grime from hands and under the fingernails
- Plastic construction with nylon bristles
- Excellent for practicing and maintaining hand and nail cleanliness
- Suitable for most settings that include hand washing stations or soap dispensers



Item #	Description	Selling Unit
226	White / Plastic	12/cs

Wet Floor Sign

- A lighter, more ergonomic wet floor sign.
- New hand holes allow easier positioning when wearing gloves
- Pinch handle makes setup quicker with just one hand



Item #	Description	Selling Unit
9152W	English/Spanish	6/cs

Wet Floor Sign – Vented

- New hand holds allow easier positioning when wearing gloves
- Base vents allow faster drying of floor
- Pinch handle makes setup quicker with just one hand
- Integrated hooks for creating a daisy chain barricade utilizing the 9140CY TriVu® Chain



Item #	Description	Selling Unit
9152BH	English / Spanish	6/cs

2 x4 Floor Signs

- Highly visible and easily manageable, these signs help get your warning across
- Folds flat for storage; bright yellow
- Lockin' arm locks solidly in place, provides warning in four directions



Item #	Description	Selling Unit
24109	No Entry / Restroom Closed	6/cs

Wet Floor Cone

- Heavy duty, wet floor cones are sturdy and easily noticeable
- Virtually unbreakable
- One-piece construction
- Wet Floor printed in black on two sides



Item #	Description	Selling Unit
9100	Orange	6/cs

Safety Signage

Banana Wet Floor Cones

- These Banana Cones are extremely effective at gaining attention and delivering the intended warning
- Stackable with or without the attached stem
- Compliant with OSHA and International Safety Standards
- Replacement stems sold separately Item# BBRNSTM
- Weight Rings available for 2ft and 3ft Cones
- Trilingual in English, Spanish and French Canadian



Item #	Description	Selling Unit
B1001	Banana Cone, 2ft Tall	3/cs
B1101	Banana Cone, 3ft Tall	3/cs
BWR24	Weight Ring for 24 in. Cone	3/cs
BWR36	Weight Ring for 36 in. Cone	3/cs
BBRNSTM	Replacement Stem for 24 in. & 36 in. Cone	3/cs

Pop Up Safety Cone

- Wall-mountable and portable, these metal-framed fabric cones store easily
- Secures areas needing to be marked off with 3 sides of messaging
- Grey plastic storage tube allows multiple mounting options; hardware included
- Private labeling available on holder, area 1" x 1-3/4"



Item #	Description	Size	Selling Unit
9182	Pop Up Safety Cone Yellow/Black	31 in.	24/cs
9183	Pop Up Safety Cone Yellow/Black	20 in.	48/cs

Safety Pole

- Prevent entry to an area by securing the doorway
- Soft, synthetic fabric sign is attached to pole and snaps closed for storage
- Fluorescent yellow/green with black imprint
- Fits in standard doorways, narrow hallways, and aisles; extends 30" - 44"



Item #	Description	Selling Unit
91751	Closed for Cleaning	6/cs

Four-Sided Floor Signs

- These easy-to-read floor signs bring attention to problem areas
- #23812, #23816, #23870, #23879 and #23887 are a highly visible yellow
- #24236 is a fluorescent green
- Imprinted on all four sides with high-contrast text



Item #	Description	Selling Unit
23812	Wet Floor	5/cs
23816	Cuidado Piso Mojado / Caution Wet Floor	5/cs
23870	Wet Floor	5/cs
23879	Cuidado Piso Mojado / Caution Wet Floor	5/cs
23887	Caution Only	5/cs

ProWorks® Caution Tape

- Non-adhesive
- Polyethylene
- Extremely durable for long term hazardous situations



Item #	Description	Color	Size	Selling Unit
TBT3000C	3 mil	Yellow	3" x 1000'	1 roll

Barrier Tape

- Easy solution for surrounding a hazard and preventing entry
- 1.5 mil polyethylene tape
- Printed to help communicate possible hazards
- Can be used with TriVu® and 2x4 signage



Item #	Description	Selling Unit
7327	Caution Do Not Enter	8/cs
7328	Caution	8/cs

ProWorks® Heavy Duty Cones

- Tough all-weather safety cones 100% PVC
- Durable, heavy duty black base that offers stability in high traffic environments
- 28" cone available with High Visibility 3M reflective cone collars, recessed to prevent wear when stacking
- Meets Federal MUTCD & NCHRP-350 Specifications



Item #	Description	Size	Selling Unit
TC18DW	Hi-Vis Orange	18"	1 ea
TC28DW	Hi-Vis Orange	28"	1 ea
TC28DW-REF46	Hi-Vis Orange, 4" and 6" Reflective Collar	28"	1 ea

Safety Cone

- Safety cones are ideal for making people aware of hazards in any facility
- Slim-line design; wide base
- Flanges on base of cone provide airflow, preventing cone tipping



Item #	Description	Selling Unit
7309	28 in. Orange Cone	6/cs

Lock-In Sign

- Mounted atop a four-sided floor sign, one of these signs will stand out
- Fits 25" and 36" 4-sided signs
- Red in color for high visibility
- 8" square space to place message labels or signage



Item #	Description	Selling Unit
26401	Lock-In Sign	50/cs

Cleaners

Microfiber Multi-Purpose Neutral Cleaner

- Neutral, concentrated floor cleaner, specially formulated for today's microfiber technology
- Eliminates hazing and streaking on all hard floors
- Use as directed to clean floors and all hard surfaces
- Safe to use on granite, wood, tile, stone, marble, terrazzo and concrete – no rinsing necessary



Item #	Fragrance	Size	Selling Unit
32MFC	Citrus	Quart	12/cs
128MFC	Citrus	Gallon	4/cs

Purple Crush Multi-Purpose Deodorizing Cleaner

- Neutral pH cleaner
- Concentrated 2 oz. per gallon
- Cleans and deodorizes all water safe surfaces
- Leaves a long lasting lavender scent



Item #	Fragrance	Size	Selling Unit
32PCLN	Lavender	Quart	6/cs
128PCLN	Lavender	Gallon	4/cs

Pineforce®

- A professional duty cleaner formulated with pure distilled pine oil, coupled with butyl cellosolve and fortified with high active penetrating, wetting and emulsifying agents
- Provides fast and complete penetration, emulsification and removal of stubborn grease, grime and soil residue
- The versatility of variable dilution ratios produces the perfect concentrate for cleaning floors, walls, woodwork, kitchens, dining areas, stoves, sinks, bathrooms, shower stalls, garbage cans, trash areas and most other high use areas
- Deodorizes by neutralizing odors on contact, leaving a clean and refreshing pine scent



Item#	Fragrance	Size	Selling Unit
82501	Pine	Gallon	4/cs

Orangeforce™

- This is a powerful concentrate of naturally occurring organic citrus oil solvents and industrial duty cleaning and degreasing agents
- This perfect combination results in superior cleaning without any petroleum-based butyl ethers or harmful chlorinated solvents
- High energy penetration and emulsification for fast and outstanding removal of tough cleaning problems



Item#	Fragrance	Size	Selling Unit
80602	Orange/Citrus	Quart	12/cs

Lemonforce™

- This is a neutral pH, multi-use cleaner with a pleasant lemon fragrance
- Easily and effectively cleans and deodorizes in one application
- Cleans and brightens all hard and shiny surfaces not harmed by water
- Requires no rinsing in all water temperatures and hardness
- Provides rapid removal of dirt, grime, soil and heel-marks to produce a clean and enhanced shine to no wax, vinyl and linoleum floors, marble, fiberglass, formica, porcelain, polished metal surfaces, enamel painted walls and woodwork and other hard and shiny surfaces
- The optical brighteners visually enhance the shine after the surface has dried
- Excellent for periodic cleaning and maintenance programs
- Non-flammable.



Item#	Fragrance	Size	Selling Unit
82001	Lemon	Gallon	4/cs

Greenforce

- A powerful green multi-use cleaner and degreaser
- Butyl cellosolve free
- A safe and very effective substitute for toxic cleaners, solvents, caustics, acids and bleach type cleaners
- Penetrates and easily emulsifies stubborn grease, oil, soil and grime from most hard surfaces not harmed by water
- Contains a malodor counteractant to deodorize
- Comparable to a well known green cleaner



Item#	Fragrance	Size	Selling Unit
82301	Sassafras	Gallon	4/cs

Marveloso™

- A powerful professional duty, butyl-free, multi-use cleaner, degreaser and deodorizer
- A safe and very effective substitute for solvents, caustics, acids, toxic cleaners and bleach type cleaners
- Fortified with high active penetrating, wetting and emulsifying agents to provide rapid and complete penetration and removal of stubborn grease, grime, oils and many other tough soils
- Excellent as a daily maintenance cleaner and deodorizer
- Variable dilution ratios produces the perfect solution for cleaning most water washable surfaces and items
- Ideal for floors, walls, woodwork, kitchens, dining areas, bathrooms, shower stalls, locker rooms, trash areas and many other high use areas
- Neutralizes odors on contact, leaving a refreshing lavender scent



Item#	Fragrance	Size	Selling Unit
82701	Lavender	Gallon	4/cs

Workforce™

- This heavy duty, multi-surface cleaner and degreaser is a powerful, non-flammable concentrate for fast penetration, emulsification and removal of heavy build-up of grease, grime, oils and other tough soils
- Ideal for use on most any washable surface such as walls, floors, ceramic, cement, synthetic rubber, vinyl, fiberglass, stainless steel, machinery, engines, tools, washing machines, food service equipment, steam cleaning, pressure washers, automatic scrubbing equipment and most other heavy cleaning requirements
- Contains a rust inhibitor to protect metals
- Rinses freely



Item#	Fragrance	Size	Selling Unit
80201	N/A	Gallon	4/cs
80205	N/A	5 Gallon	1 ea

Workforce™ Plus

- This super heavy duty concentrate is designed for maximum efficiency in degreasing, emulsifying and suspending heavy deposits of grease, oil and other heavy soils
- Free rinsing; leaves no residue
- Formulated with a rust inhibitor to protect ferrous metals
- Excellent as a safe water soluble safety solvent replacement for many flammable solvents, caustic and acid based cleaners
- Formulated for heavy cleaning operations in hostile environments such as industrial manufacturing, heavy construction equipment, food service equipment, drilling rigs, ovens, grills, bbq's, laundry, steam and pressure cleaning, floor maintenance, engines and many other heavy duty cleaning requirements not harmed by water



Item#	Fragrance	Size	Selling Unit
80101	N/A	Gallon	4/cs
80105	N/A	5 Gallon	1 ea

Grout HD Cleaner and Revitalizer

- Penetrates and quickly removes ground in grime from tile, grout lines, and natural stone, leaving behind a bright and revitalized surface
- Utilizes cutting edge technology to provide a product free of harsh chemicals like strong acids and caustic soda, allowing it to be safe on skin and the environment
- Low VOC with no harmful fumes
- Nonabrasive with no noxious odor
- Diluted pH 1-1.5
- Effective on dirt, grease, wax, mildew, and soap scum on terrazzo, granite, ceramic, travertine
- Great tub and tile cleaner, toilet bowl cleaner, scale remover, rust stain remover, and a vinyl/aluminum siding cleaner



Item #	Size	Selling Unit
128GCB	Gallon	4/cs

Bio-Enzymatic Multi-Surface Degreaser

- Contains grease loving bacteria, enzymes, and orange oil extracts
- Removes dirt, grease, animal fats & protein build-up from floors and grouting
- Helps restore grout to its original color
- Concentrated
- Diluted pH 8.5-9.5
- Biodegradable and non-caustic



Item #	Fragrance	Size	Selling Unit
128FD	Orange	Gallon	4/cs



Wiping Solutions · Gloves · Cleaning Chemicals · Textiles & Linens · Personal Care · Odor Control
Controlled Environments · Safety · Cleaning Tools & Accessories · Food Service · Specialty Products